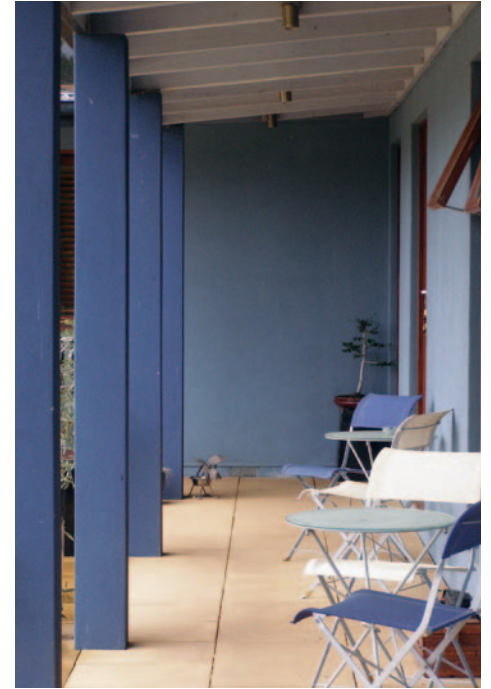


Casa Luna



Casa Luna is a custom-designed and purpose-built accommodation house in a modern Australian style, set on a hill overlooking the beautiful & intimate valley of the Boggy Creek at Myrree in North East Victoria. Located in the uniquely diverse King Valley region. Casa Luna Gourmet Accommodation was nominated as a finalist in The Australian Travel and Tourism Awards in 2006 and was later awarded a Federal Government grant to assist in the development of further tourism infrastructure in the King Valley.

In 2003, we were invited to tender for the first part of the development, the main house and dining room, from plans prepared by Helen Mathew of Mountain Creek Architecture. Subsequently Ovens & King built the first stage of this exciting foray into providing first class accommodation in the growing King Valley wine and food region. From this outstanding building, our clients, Gwenda and David, have provided a relaxing, comfortable and delicious experience for guests, with a focus on warm, personalised service.

The Main Building was set down into the landscape on a site cut. Most of the house was built on a concrete slab with the Dining room area extending over the remaining slope on a timber sub floor frame. This carries a superb secret nailed jarrah floor.

The primary wall fabric consists of a Hebel Panel Veneer that has been rendered. The striking curved roof line gives a unique appearance and is followed through in the curved plaster ceilings inside. Cedar windows add a warm natural feel that complements the timber floors inside the Dining room. A marble top caps a rendered fireplace that features a slow burning wood fire.

Casa Luna



The success of the original building led to a need for expansion to meet the continuing demand for this kind of quality accommodation. Ovens and King Builders were invited to return in 2010 and undertake Stage Two of the Casa Luna development, the La Piazza project and the new King Suites.

Stage Two is a different type of building, specifically designed by Rob Rowlands of Freedom of Design, to complement the existing landscape and buildings but to be distinct in its own way.

The second building is completely built on a timber floor frame and flows down the slope with seven discreet floor levels. The cladding of corrugated iron maintains the Australian homestead styling complete with skillion roof and water tank. Preformed columns extend from the decked areas to support the verandas, their rendered finish coloured to tie into the original building.

Two Bedroom suites, each with En Suite, are separated by a large Living room featuring a polished hardwood floor and raked plaster ceiling. The double glazed aluminium windows extend through corner walls to add light and space to the Living room.



REGISTERED
Building Practitioner

Casa Luna



The En suites both feature walk in showers with tiled floors throughout. Heated towel rails, custom built vanities and glass splashbacks all provide for a sense of style and quality which is at the heart of the Casa Luna experience. Corner Toilet suites maximise space without compromising the overall effect.

The construction of a free standing Outdoor Kitchen area links the two buildings and enhances the facilities for guests with a wood fired pizza oven, barbecue and custom built table and benches.

Casa Luna is a great example of a partnership between Clients, Designer and Builders, all sharing a clear focus on quality and integrity in design, construction and finish. Successful communications, written, drawn and discussed, are the key tools. An ability to relate to the values the Clients are trying to achieve is vital. We're very proud of our work at Casa Luna, both in the buildings and in the relationships.

For more information about Casa Luna and the unique accommodation experience offered by Gwenda and David, www.casaluna.com.au